

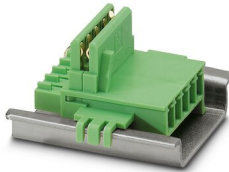
# ME 22,5 TBUS 1,5/ 5-ST-3,81 GN - DIN rail bus connectors



2707437

<https://www.phoenixcontact.com/us/products/2707437>

Please be informed that the data shown in this PDF document is generated from our online catalog. Please find the complete data in the user documentation. Our general terms of use for downloads are valid.



DIN rail connector, color: green, nominal current: 8 A (parallel contacts), rated voltage (III/2): 125 V, number of positions: 5, pitch: 3.81 mm, mounting: DIN rail mounting, locking: without, mounting: without, type of packaging: packed in cardboard, Item with gold-plated contacts, bus connectors for connecting with electronics housings, 5 parallel contacts

## Your advantages

- Space-saving installation under the housing in the DIN rail
- Contact design enables electronics modules to be easily snapped on
- Power supply and communication without additional wiring
- Parallel and serial contacts for efficient signal and data transmission

## Commercial data

Item number	2707437
Packing unit	1 pc
Minimum order quantity	50 pc
Sales key	AC08
Product key	ACHACA
Catalog page	Page 433 (C-5-2017)
GTIN	4017918911928
Weight per piece (including packing)	5.083 g
Weight per piece (excluding packing)	4.899 g
Customs tariff number	85366990
Country of origin	DE

# ME 22,5 TBUS 1,5/ 5-ST-3,81 GN - DIN rail bus connectors



2707437

<https://www.phoenixcontact.com/us/products/2707437>

## Technical data

### Notes

Recommendation	Material of contact pads for bus connector, galvanic gold (hard gold)
----------------	---

### Product properties

Product type	DIN rail connector
Product family	TBUS5..3,81
Number of positions	5
Pitch	3.81 mm

### Electrical properties

Nominal current $I_N$	8 A (parallel contacts)
Nominal voltage $U_N$	125 V
Degree of pollution	3
Contact resistance	4.4 m $\Omega$
Rated surge voltage (III/3)	2.5 kV
Rated voltage (III/2)	125 V
Rated surge voltage (III/2)	2.5 kV
Rated voltage (II/2)	320 V
Rated surge voltage (II/2)	2.5 kV

### Connection data

Maximum load current	8 A
----------------------	-----

### Dimensions

Pitch	3.81 mm
Width [w]	29.2 mm
Height [h]	36.5 mm
Length [l]	20.45 mm

### Material specifications

#### Material data - contact

Contact material	Cu alloy
Surface characteristics	gold-plated

#### Material data - housing

Color (Housing)	green (6021)
Insulating material	PA
Insulating material group	I
CTI according to IEC 60112	600
Flammability rating according to UL 94	V0

# ME 22,5 TBUS 1,5/ 5-ST-3,81 GN - DIN rail bus connectors



2707437

<https://www.phoenixcontact.com/us/products/2707437>

## Connector

### Connection 1

Insulating material	PA
CTI according to IEC 60112	600

## Electrical tests

### Thermal test | Test group C

Specification	IEC 60512-5-1:2002-02
Tested number of positions	5

### Air clearances and creepage distances |

Specification	IEC 60664-1:2007-04
Insulating material group	I
Rated surge voltage (III/3)	2.5 kV
minimum clearance value - non-homogenous field (III/3)	1.5 mm
minimum creepage distance (III/3)	1.9 mm
Rated insulation voltage (III/2)	125 V
Rated surge voltage (III/2)	2.5 kV
minimum clearance value - non-homogenous field (III/2)	1.5 mm
minimum creepage distance (III/2)	0.75 mm
Rated insulation voltage (II/2)	320 V
Rated surge voltage (II/2)	2.5 kV
minimum clearance value - non-homogenous field (II/2)	1.5 mm
minimum creepage distance (II/2)	1.6 mm

## Mechanical tests

### Insertion and withdrawal forces

Result	Test passed
No. of cycles	25
Insertion strength per pos. approx.	6 N
Withdraw strength per pos. approx.	5 N

### Contact holder in insert

Specification	IEC 60512-15-1:2008-05
Contact holder in insert Requirements >20 N	Test passed

### Polarization and coding

Specification	IEC 60512-13-5:2006-02
Result	Test passed

### Visual inspection

Specification	IEC 60512-1-1:2002-02
Result	Test passed

# ME 22,5 TBUS 1,5/ 5-ST-3,81 GN - DIN rail bus connectors



2707437

<https://www.phoenixcontact.com/us/products/2707437>

## Dimension check

Specification	IEC 60512-1-2:2002-02
Result	Test passed

## Environmental and real-life conditions

### Vibration test

Specification	IEC 60068-2-6:2007-12
Frequency	10 - 150 - 10 Hz
Sweep speed	1 octave/min
Amplitude	0.35 mm (10 Hz ... 60.1 Hz)
Sweep speed	5g (60.1 Hz ... 500 Hz)
Test duration per axis	2.5 h

### Durability test

Specification	IEC 60512-9-1:2010-03
Impulse withstand voltage at sea level	2.95 kV
Contact resistance R <sub>1</sub>	4.4 mΩ
Contact resistance R <sub>2</sub>	4.5 mΩ
Insertion/withdrawal cycles	25

### Climatic test

Specification	ISO 6988:1985-02
Corrosive stress	0.2 dm <sup>3</sup> SO <sub>2</sub> on 300 dm <sup>3</sup> /40 °C/1 cycle
Thermal stress	100 °C/168 h
Power-frequency withstand voltage	1.39 kV

### Glow-wire test

Specification	IEC 60695-2-10:2013-04
Temperature	850 °C
Time of exposure	30 s

### Shocks

Specification	IEC 60068-2-27:2008-02
Pulse shape	Semi-sinusoidal
Acceleration	15g
Shock duration	11 ms
Test directions	X-, Y- and Z-axis (pos. and neg.)

### Ambient conditions

Ambient temperature (operation)	-40 °C ... 105 °C (dependent on the derating curve)
Ambient temperature (storage/transport)	-40 °C ... 55 °C
Relative humidity (storage/transport)	30 % ... 70 %
Ambient temperature (assembly)	-5 °C ... 100 °C

## Mounting

# ME 22,5 TBUS 1,5/ 5-ST-3,81 GN - DIN rail bus connectors



2707437

<https://www.phoenixcontact.com/us/products/2707437>

Mounting type	DIN rail mounting
---------------	-------------------

## Packaging specifications

Type of packaging	packed in cardboard
Outer packaging type	Carton

# ME 22,5 TBUS 1,5/ 5-ST-3,81 GN - DIN rail bus connectors

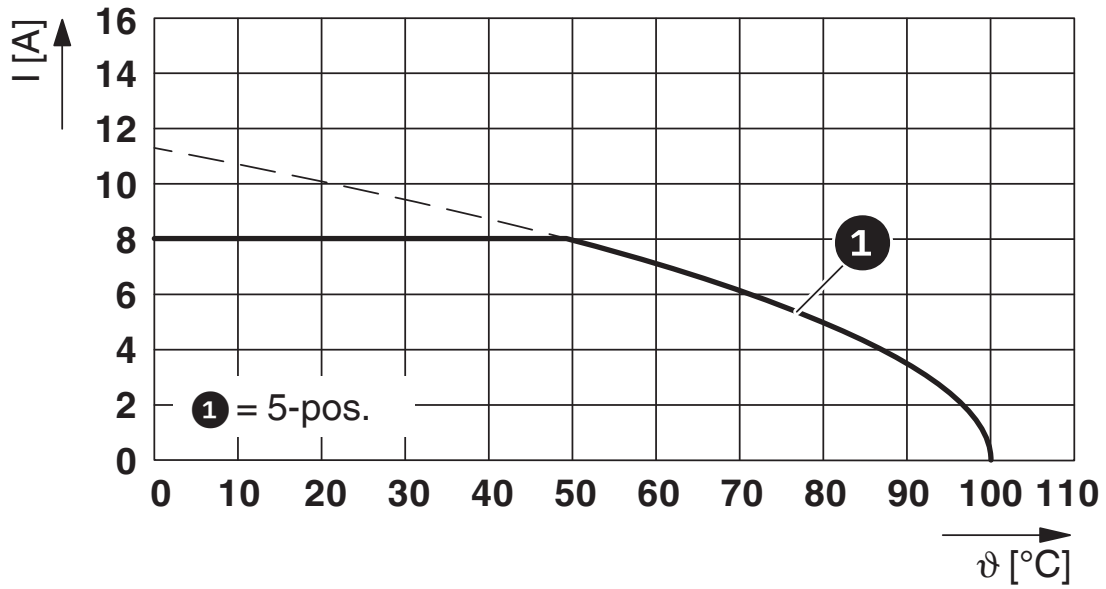


2707437

<https://www.phoenixcontact.com/us/products/2707437>

## Drawings

Diagram



Type: TBUS5...

# ME 22,5 TBUS 1,5/ 5-ST-3,81 GN - DIN rail bus connectors





2707437

<https://www.phoenixcontact.com/us/products/2707437>

## Approvals

To download certificates, visit the product detail page: <https://www.phoenixcontact.com/us/products/2707437>

 <b>cUL Recognized</b> Approval ID: E118976-20151204				
	Nominal voltage $U_N$	Nominal current $I_N$	Cross section AWG	Cross section $\text{mm}^2$
	150 V	6 A	-	-

 <b>UL Recognized</b> Approval ID: E118976-20151204				
	Nominal voltage $U_N$	Nominal current $I_N$	Cross section AWG	Cross section $\text{mm}^2$
	150 V	8 A	-	-

<b>cULus Recognized</b>				
-------------------------	--	--	--	--

# ME 22,5 TBUS 1,5/ 5-ST-3,81 GN - DIN rail bus connectors



2707437

<https://www.phoenixcontact.com/us/products/2707437>

## Classifications

### ECLASS

ECLASS-11.0	27460201
ECLASS-12.0	27460201
ECLASS-13.0	27460201

### ETIM

ETIM 9.0	EC002637
----------	----------

### UNSPSC

UNSPSC 21.0	39121400
-------------	----------



# ME 22,5 TBUS 1,5/ 5-ST-3,81 GN - DIN rail bus connectors



2707437

<https://www.phoenixcontact.com/us/products/2707437>

## Environmental product compliance

China RoHS	Environmentally friendly use period: unlimited = EFUP-e
	No hazardous substances above threshold values

# ME 22,5 TBUS 1,5/ 5-ST-3,81 GN - DIN rail bus connectors



2707437

<https://www.phoenixcontact.com/us/products/2707437>

## Accessories

### E/ME TBUS NS35 GY - End clamp

2713780

<https://www.phoenixcontact.com/us/products/2713780>



End clamp, stable construction for DIN rail bus connector

---

### IMC 1,5/ 5-ST-3,81 AU - Printed-circuit board connector

1943276

<https://www.phoenixcontact.com/us/products/1943276>



PCB connector, nominal cross section: 1.5 mm<sup>2</sup>, color: green, nominal current: 8 A, rated voltage (III/2): 160 V, contact surface: Gold, contact connection type: Pin, number of potentials: 5, number of rows: 1, number of positions: 5, number of connections: 5, product range: IMC 1,5/..-ST, pitch: 3.81 mm, connection method: Screw connection with tension sleeve, screw head form: L Slotted, conductor/PCB connection direction: 0 °, plug-in system: COMBICON MC 1,5, locking: without, mounting: without, type of packaging: packed in cardboard

# ME 22,5 TBUS 1,5/ 5-ST-3,81 GN - DIN rail bus connectors



2707437

<https://www.phoenixcontact.com/us/products/2707437>

## IMC 1,5/ 5-ST-3,81 GY7035 AU - Printed-circuit board connector

1719707

<https://www.phoenixcontact.com/us/products/1719707>



PCB connector, nominal cross section: 1.5 mm<sup>2</sup>, color: light grey, nominal current: 8 A, rated voltage (III/2): 160 V, contact surface: Gold, contact connection type: Pin, number of potentials: 5, number of rows: 1, number of positions: 5, number of connections: 5, product range: IMC 1,5/...-ST, pitch: 3.81 mm, connection method: Screw connection with tension sleeve, screw head form: L Slotted, conductor/PCB connection direction: 0 °, plug-in system: COMBICON MC 1,5, locking: without, mounting: without, type of packaging: packed in cardboard

---

Phoenix Contact 2023 © - all rights reserved

<https://www.phoenixcontact.com>

Phoenix Contact USA  
586 Fulling Mill Road  
Middletown, PA 17057, United States  
(+717) 944-1300  
[info@phoenixcon.com](mailto:info@phoenixcon.com)